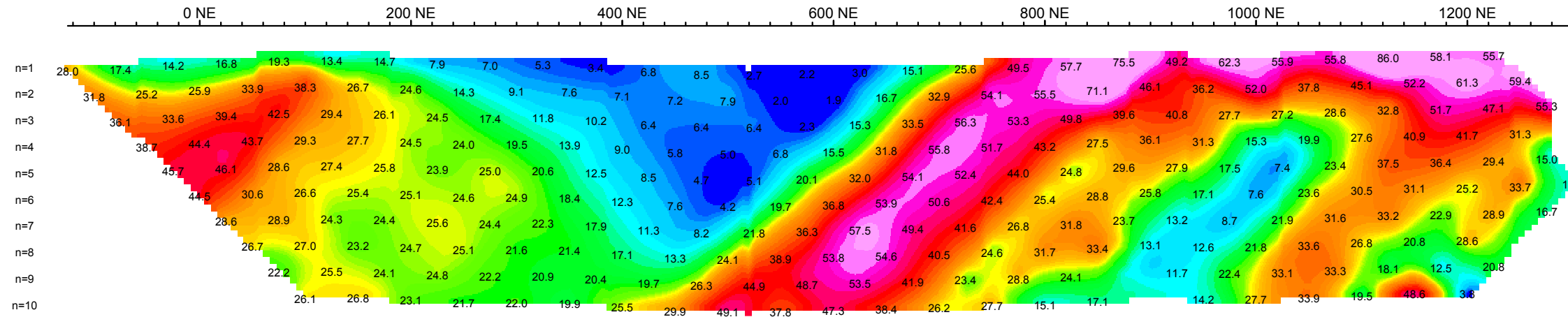
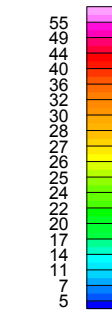


IP\_FINAL

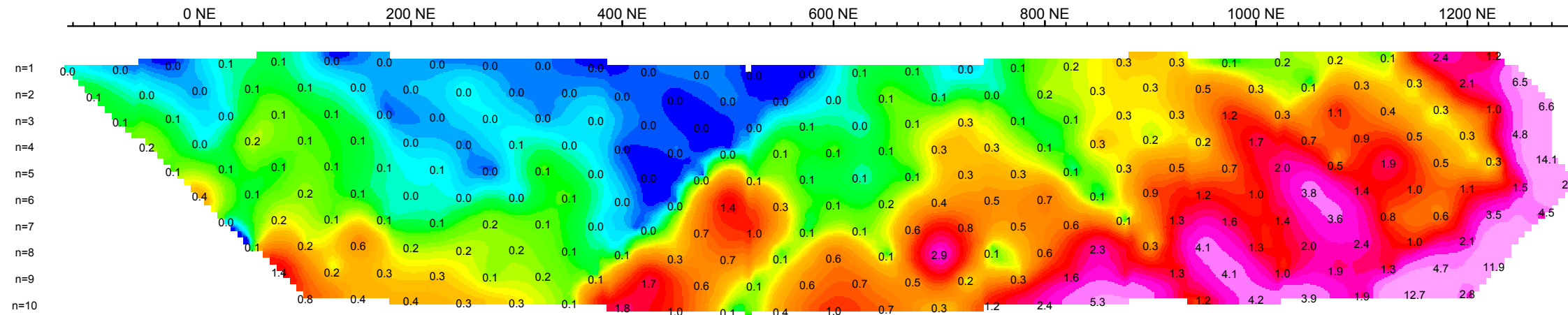


IP\_FINAL

n=1  
n=2  
n=3  
n=4  
n=5  
n=6  
n=7  
n=8  
n=9  
n=10

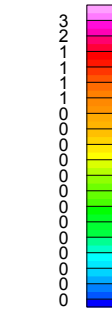


IPErr\_FINAL

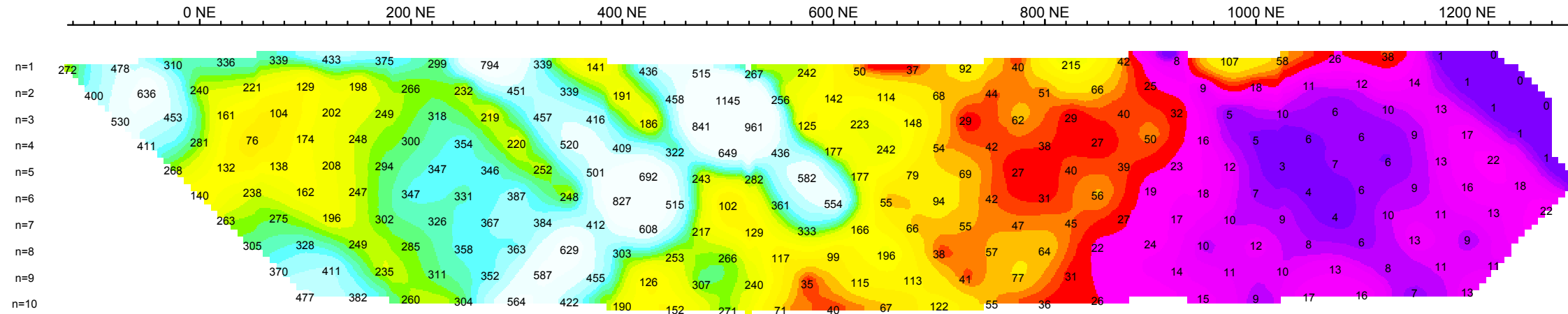


IPErr\_FINAL

n=1  
n=2  
n=3  
n=4  
n=5  
n=6  
n=7  
n=8  
n=9  
n=10

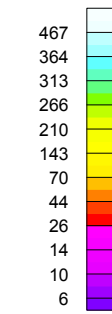


App. resistivity  
Ohm\*m



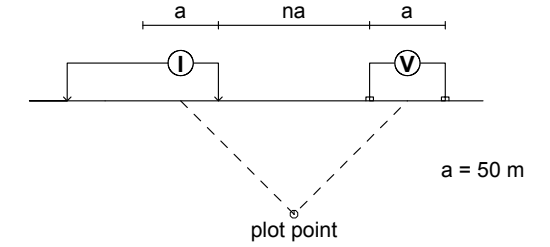
App. resistivity  
Ohm\*m

n=1  
n=2  
n=3  
n=4  
n=5  
n=6  
n=7  
n=8  
n=9  
n=10



## PSEUDOSECTION PLOTS L0 NW

### Modified Dipole-Dipole Array



Stationary electrode at 200E (moving W).

Receiver: GDD IP Receiver GRx16

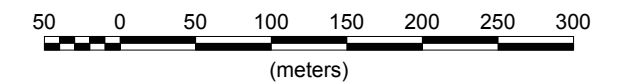
Transmitter: GDD Tx-II 3.6kW

Data File: Miller Creek IP.xyz

Dates Surveyed : Aug 26, 2011

# FIELD

Scale 1:5000



## RADIUS GOLD CORP.

60 MILE PROJECT  
MILLER CREEK ZONE  
L0 NW PSEUDOSECTION PLOTS

DAWSON MINING DISTRICT, YUKON, CANADA

NTS : 116C 02

DATE SURVEYED : AUG 2011

DRAWN BY: AL / DATE DRAWN: AUG 28

## AURORA GEOSCIENCES LTD.